

TRUE NORTH AT THE 7825.50"
MERIDIAN OF WEST LONGITUDE

SURVEY NOTES:

1. PROJECT LOCATION: TOWN OF PERINTON, MONROE COUNTY
2. PROJECT UNITS: U.S. SURVEY FEET.
3. DISTANCES SHOWN AND/OR EXTRACTED FROM THIS CAD FILE ARE GRID DISTANCES.
4. PROJECT COMBINED SCALE FACTOR: 1.0000228135
5. HORIZONTAL DATUM IS REFERENCED TO NAD83(2011) - NEW YORK STATE PLANE COORDINATE SYSTEM, WEST ZONE. HORIZONTAL POSITIONS ESTABLISHED ON THE GROUND VIA STAFF CROSS METHODS FROM NY CORP NYFP, NYDV AND NYET. DIFFERENTIAL LEVELS WERE RUN WITH A TRIMBLE DGN DIGITAL LEVEL BETWEEN ALL BASELINE STATIONS. THE LEVEL RUN HAD A CLOSING ERROR OF 0.012 FEET, WITH AN ALLOWABLE ERROR OF 0.020 FEET. THE LEVEL RUN WAS ADJUSTED UTILIZING A STARNET LEAST SQUARES ADJUSTMENT.
6. VERTICAL DATUM IS REFERENCED TO NAVD83. NAVD83 ELEVATIONS WERE ESTABLISHED ON THE GROUND VIA GNSS STATIC OBSERVATIONS FROM NY CORP NYFP, NYDV AND NYET. DIFFERENTIAL LEVELS WERE RUN WITH A TRIMBLE DGN DIGITAL LEVEL BETWEEN ALL BASELINE STATIONS. THE LEVEL RUN HAD A CLOSING ERROR OF 0.012 FEET, WITH AN ALLOWABLE ERROR OF 0.020 FEET. THE LEVEL RUN WAS ADJUSTED UTILIZING A STARNET LEAST SQUARES ADJUSTMENT.

RIGHT-OF-WAY NOTES:

1. C.R. 21 (AYRAULT ROAD) WAS SURVEYED AND ESTABLISHED AS A PUBLIC HIGHWAY ON FEBRUARY 29TH, 1820 WITH A DECLARED WIDTH OF 4 RODS ACCORDING TO COUNTY ROAD RIGHT OF WAY RECORDS.
2. 1966 RECORD MAPPING DISPLAYING LAND ACQUISITIONS FOR HIGHWAY PURPOSES DEFINE THE CENTERLINE OF R.O.W. FOR THE ENTIRE PROJECT CORRIDOR. FEE ACQUISITIONS ARE DEFINED BY STATION AND OFFSET FROM SAID CENTERLINE. THIS MAPPING ALSO SUPPORTS A 4 ROD RIGHT OF WAY WIDTH.
3. EXISTING FILED SUBDIVISIONS SURROUND THE AYRAULT ROAD PROJECT SITE ON ALL QUADRANTS. EACH FILED SUBDIVISION MAP MAKES REFERENCE TO MONUMENTS SET. THE LOCATIONS OF THESE CALLED OUT MONUMENTS ARE NOTED ON THE HIGHWAY BOUNDARY WORKSHEET HEREIN. MANY OF WHICH WERE RECOVERED.
4. SUBDIVISION MAP GEOMETRY WAS BEST FIT TO THE RECOVERED MONUMENTS. THE BEST FIT WAS FOCUSED ON MONUMENTS CALLED OUT ON EACH PLAT, WITH SECONDARY CONSIDERATION GIVEN TO EVIDENCE RECOVERED ON LOT LINES. NO MAJOR OVERLAPS, GAPS OR OTHER MISCLOSEURES WERE FOUND. LOCATIONS OF MINOR MATHEMATICAL MISCLOSEURES ARE NOTED ON THE HIGHWAY BOUNDARY WORKSHEET HEREIN.
5. THE 1966 HIGHWAY ACQUISITION GEOMETRY WAS FIT NORTH-SOUTH BY SPLITTING HIGHWAY BOUNDARIES CREATED BY THE PLACEMENT OF THE AFORESAID SUBDIVISION MAPS. THE EAST-WEST POSITION OF THE ACQUISITION GEOMETRY WAS BEST FIT TO RECOVERED HIGHWAY MONUMENTS.

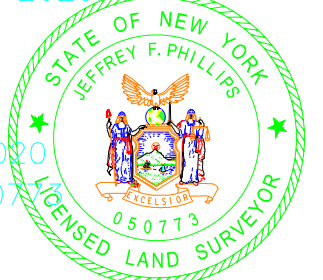
CENTERLINE OF IMPROVEMENT NOTE:

1. THE 2020 DESIGN CENTERLINE OF IMPROVEMENT IS COINCIDENT WITH THE 1966 ALIGNMENT CENTERLINE. STATION VALUES OF CENTERLINE OF IMPROVEMENT ARE BASED ON VALUES FROM 1966 RECORD PLATS.

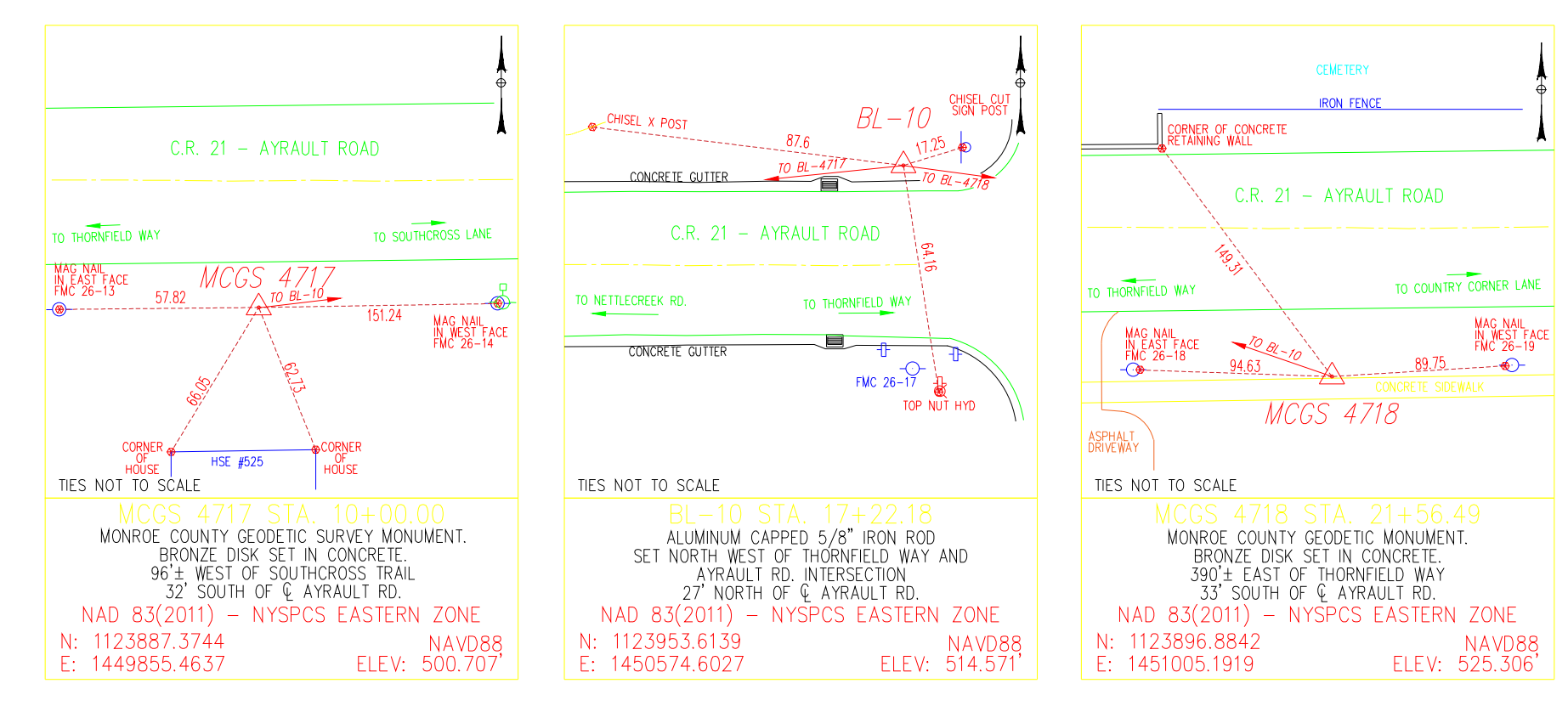
CERTIFICATION:

We, Papil, Architecture + Engineering & L.S., D.P.C. hereby certify that the highway boundary shown on this plan was completed under the supervision of a Licensed Land Surveyor, and was produced in accordance to the standards and procedures set forth by the Monroe County Surveyor's Office. The Highway Boundary shown was completed from an instrument survey completed January 9, 2023.

[Signature]
Date: 1/31/2023
Alex J. Phillips, P.L.S., License No. 5000
Papil, Architecture + Engineering & L.S., D.P.C.



SURVEY CONTROL DATA

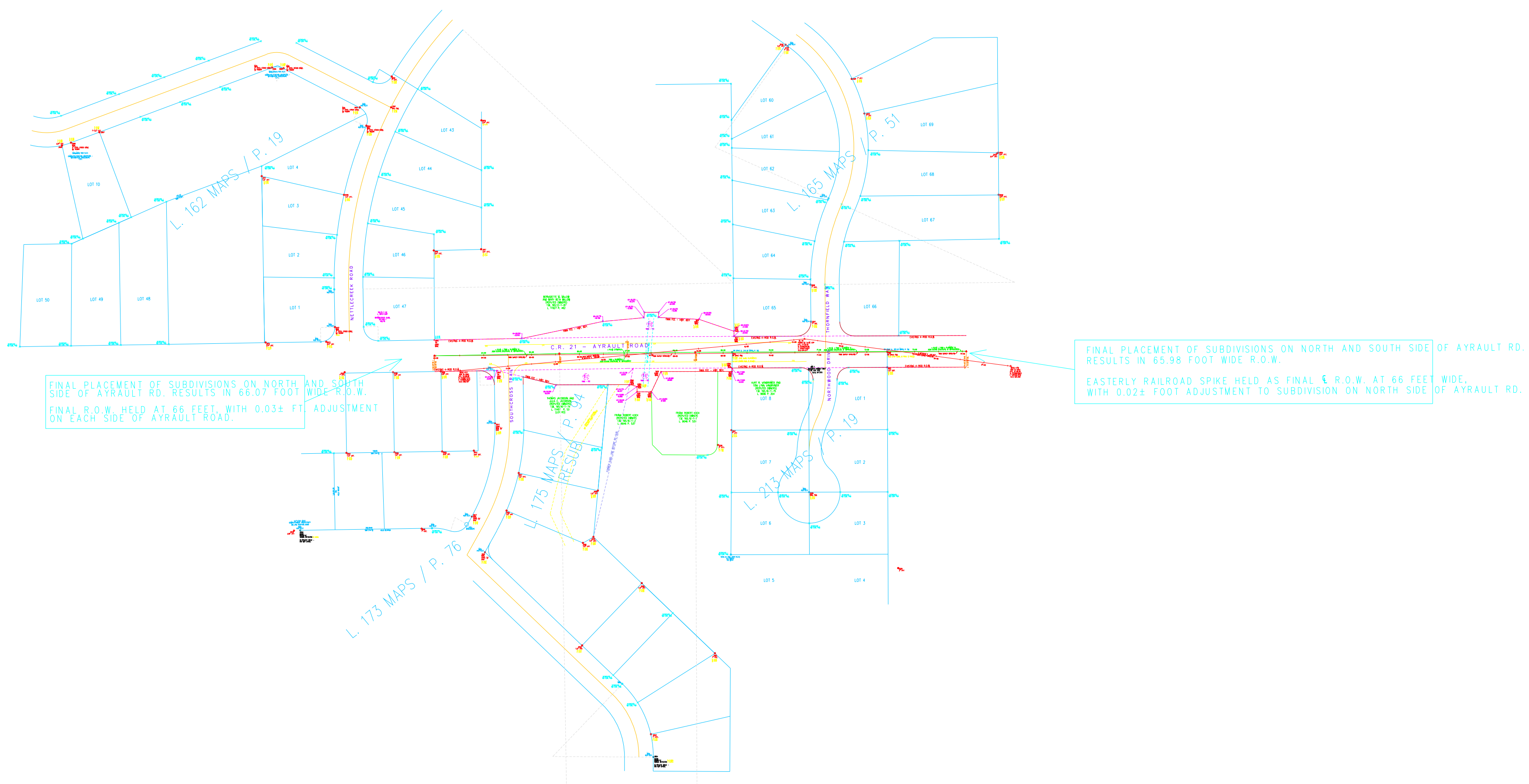


BENCHMARK TABLE		
NAME	DESCRIPTION	NAVD 88 ELEVATION
MCDS 477	BENCHMARK IS A MCDS MONUMENT, BEING A BRONZE DISK SET 0.3' BELOW GRADE, 96'2" WEST OF SOUTHCROSS TRAIL 32'2" SOUTH OF THE CENTERLINE OF AYRAULT RD.	500.707'
BM #1	BENCHMARK IS THE NORTH BOLT OF A FIRE HYDRANT SOUTH WEST OF NORTHWOOD DRIVE AND AYRAULT ROAD.	517.213
MCDS 478	BENCHMARK IS A MCDS MONUMENT, BEING A BRONZE DISK SET 0.3' BELOW GRADE, 390'2" EAST OF THORNFIELD WAY AND 33'2" SOUTH OF THE CENTERLINE OF AYRAULT RD.	525.306'

MONROE COUNTY GEODETIC SURVEY MONUMENTS

1. TWO MONROE COUNTY GEODETIC SURVEY MONUMENTS WERE RECOVERED WITHIN THE PROJECT LIMITS AND WERE USED AS PART OF THE 2020 SURVEY BASELINE.
2. RECOVERED MCDS MONUMENTS ARE BRONZE DISKS SET IN CONCRETE, 3/4" INCHES BELOW GRADE.
3. MCDS MONUMENTS FOUND IN GOOD CONDITION.

MCDS MONUMENT	PUBLISHED NAD 1927	MEASURED NAD 83(2011)
MCDS 478	N 1,123,857.301 E 802,646.653	N 1,123,886.8842 E 1,451,033.1919
MCDS 477	N 1,123,847.739 E 800,496.967	N 1,123,887.3744 E 1,448,955.4637



FINAL PLACEMENT OF SUBDIVISIONS ON NORTH AND SOUTH SIDES OF AYRAULT RD. RESULTS IN 45.94 FOOT WIDE R.O.W. EASTERLY RAILROAD SPIKE HELD AS FINAL R.O.W. AT 86 FEET. WITH 0.024 FOOT ADJUSTMENT TO SUBDIVISION ON NORTH SIDE OF AYRAULT RD.

FINAL PLACEMENT OF SUBDIVISIONS ON NORTH AND SOUTH SIDES OF AYRAULT RD. RESULTS IN 45.94 FOOT WIDE R.O.W. EASTERLY RAILROAD SPIKE HELD AS FINAL R.O.W. AT 86 FEET. WITH 0.024 FOOT ADJUSTMENT TO SUBDIVISION ON NORTH SIDE OF AYRAULT RD.